

CTA milk[®]

VACUUM PUMPS FOR MILKING MACHINES

BLOWER SERIES (BLW) P.V.3300/5000

The **CTA milk S.r.l.** developed for the market in Milking a drypump model 3 lobes.

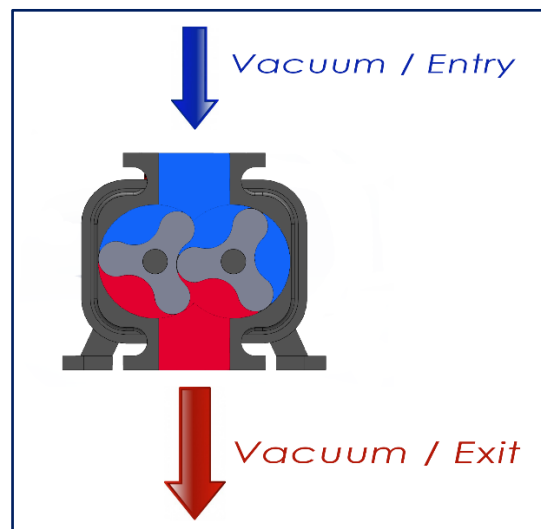
We extreme market trend that has already developed the offer with a progressive detachment from the classic compressor rotor with two lobes in favor of machines with a rotor with three lobes.

Technological advantages of the use of blowers/compressors with 3-lobe rotors:

- Improved rigidity: the beam of the rotor 8 times more rigid
- Better balance: distribution more homogeneous masses
- Increased prevalence: 2 points leakproofness dynamic rotor/body
- Minor pulsations: 6 rounds instead of 4 for rotating shaft
- Minor loss of performance: less sensitive to compression

ZERO POLLUTION: The principle of pumping is completely oil-free and without sealing elements subject to wear. The air emission is therefore totally free of oil mist or fine dust, defects and una voidable typical vane pump “RESPECT THE ENVIRONMENT”.

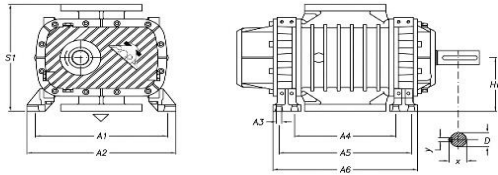
MINIMUM ORDINARY MAINTENANCE: Periodic filter replacement air cooling and lubricating bearings “LOW OPERATING COSTS”.



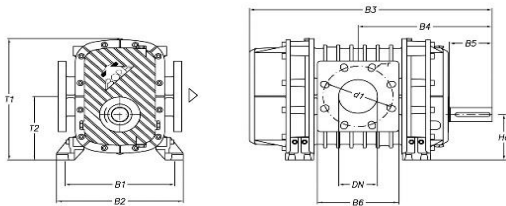
BLOWER PUMPS DIMENSIONS

P.V. 3300 BLW

VERTICAL POSITION



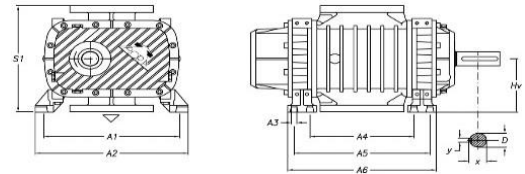
HORIZONTAL POSITION



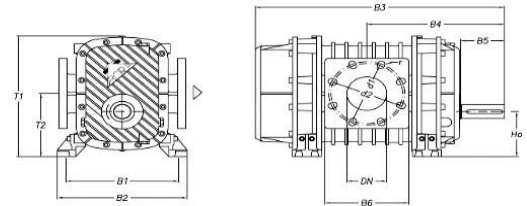
DN	A1	A2	A3	A4	A5	A6	S1	x	y	D	Hv	Ho
80	$\frac{340}{370}$	38.3	14	165	245	276	318	45	12	42	160	135
$\frac{B1}{\text{ref. max}}$	B2	B3	B4	B5	B6	T1	T2	d1	d2	N'feri	r	Peso kg
$\frac{273}{313}$	326	529	298	110	200	361	189	160	-	8	9	113

P.V. 5000 BLW

VERTICAL POSITION



HORIZONTAL POSITION



DN	A1	A2	A3	A4	A5	A6	S1	x	y	D	Hv	Ho
100/4"	$\frac{340}{370}$	38.3	14	215	295	326	318	45	12	42	160	135
$\frac{B1}{\text{ref. max}}$	B2	B3	B4	B5	B6	T1	T2	d1	d2	N'feri	r	Peso Kg
$\frac{283}{313}$	326	579	322.5	110	210	361	189	180	190.5	8	9	118

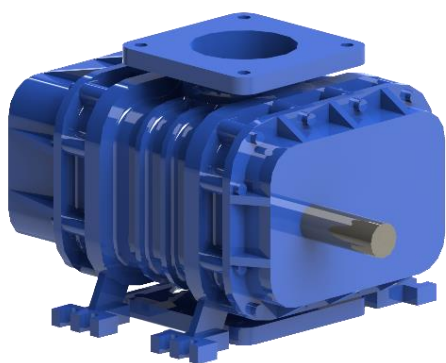
TECHNICAL INFORMATION VACUUM PUMPS BLOWER – P.V. 3300

POWER	MOTOR	Kpa	RPM PUMP	N.L./MIN.	ABSORB. MOT.(A)	PULLEY PUMP Ø	MOTOR PULLEY	RPM MOTOR
7,5 Kw / 10 Hp	400/690V	50	2450	3000	13,6	180 2B	150 2B	2800
		40	2450	3850	13	180 2B	150 2B	2800
9,2 Kw / 11 Hp	400/690V	50	2800	4100	16	180 2B	180 2B	2800
		40	2800	5000	15,5	180 2B	180 2B	2800

TECHNICAL INFORMATION VACUUM PUMPS BLOWER – P.V. 5000

POWER	MOTOR	Kpa	RPM PUMP	N.L./MIN.	ABSORB. MOT.(A)	PULLEY PUMP Ø	MOTOR PULLEY	RPM MOTOR
11 Kw / 15 Hp	400/690V	50	2530	5000	16,5	210 2B	190 2B	2800
		40	2530	5600	16	210 2B	190 2B	2800
11 Kw / 15 Hp	400/690V	50	2800	5800	19	210 2B	210 2B	2800
		40	2800	6400	18,5	210 2B	210 2B	2800

P.V. BLOWER PUMPS BARE



P.V. 3300 BLW BARE Cod. 1000163

P.V. 5000 BLW BARE Cod. 1000155

G.P.V. BLOWER PUMPS ON BRACKET

G.P.V.3300 BLW ON BRACKET WITH 1 SILENCER

(3300 l/min a 50 kPa (7,5 Kw))

Cod. 1000164

G.P.V.3300 BLW ON BRACKET WITH 1 SILENCER

(4200 l/min a 50 kPa (9,2 Kw))

Cod. 1000166

G.P.V.5000 BLW ON BRACKET WITH 1 SILENCER

(5000 l/min a 50 kPa (11 Kw))

Cod. 1000159

G.P.V.5000 BLW ON BRACKET WITH 1 SILENCER

(6000 l/min a 50 kPa (11 Kw))

Cod. 1000160



G.P.V.3300 BLW ON BRACKET WITH 2 SILENCERS

(3300 l/min a 50 kPa (7,5 Kw))

Cod. 1000165

G.P.V.3300 BLW ON BRACKET WITH 2 SILENCERS

(4200 l/min a 50 kPa (9,2 Kw))

Cod. 1000167



G.P.V.5000 BLW ON BRACKET WITH 2 SILENCERS

(5000 l/min a 50 kPa (11 Kw))

Cod. 1000157

G.P.V.5000 BLW ON BRACKET WITH 2 SILENCERS

(6000 l/min a 50 kPa (11 Kw))

Cod. 1000158

G.P.V. BLOWER PUMPS IN SOUNDPROOF BOOTH



WHIT 01 SILENCER



WITH 02 SILENCERS

G.P.V.3300 BLW ON BRACKET WITH SIL. SOUNDPROOF BOOTH

(3300 l/min a 50 kPa (7,5 Kw))

Cod. 1000160.02

G.P.V.3300 BLW ON BRACKET WITH SIL. SOUNDPROOF BOOTH

(4200 l/min a 50 kPa (9,2 Kw))

Cod. 1000160.03

THE SECOND SILENCER ENTER/EXIT

IS AN OPTIONAL

Cod. 6000245

G.P.V.5000 BLW ON BRACKET WITH SIL. SOUNDPROOF BOOTH

(5000 l/min a 50 kPa (11 Kw))

Cod. 1000155.02

G.P.V.5000 BLW ON BRACKET WITH SIL. SOUNDPROOF BOOTH

(6000 l/min a 50 kPa (11 Kw))

Cod. 1000155.03

THE SECOND SILENCER ENTER/EXIT

IS AN OPTIONAL

Cod. 6000246

FILTER

3-inch FILTER T-SHAPE with 1" OUTLET

Cod. 2000165



For all vacuum systems we strongly recommended use this 3-inch Filter T-shape